

SOLVAY AND SUSTAINABLE DEVELOPMENT

Sustainable development means development meeting present needs without prejudicing the ability of future generations to satisfy theirs.

The Solvay Group works at this daily. In 1998 it devoted some 4% of the value of sales (nearly EUR 300 million) to this.

TARGETS FOR 2000-2003

Specific targets are set every two years either for the whole Group or for specific Strategic Business Units (SBUs).

The emphasis is increasingly put on the ecoefficiency of products.

In addition to the 24 targets already being pursued, **24 new targets** have been set for the period 2000-2003:

10 are aimed at improving the net ecological benefit from our products,

3 are concerned with recycling or processing of products at the end of their life,

5 are aimed at reducing the impact of our activities on the environment,

6 are concerned with further improving health and safety both within and outside our plants.

The full 1999 Health, Safety and Environment Report describes these targets in detail.

It can be obtained on request from the addresses shown on the reverse; it is also available on the Internet: <http://www.solvay.com> (section: LIBRARY).

Country or regional reports are available on Spain, Italy, Belgium, the Netherlands, France, Germany, Switzerland, the United Kingdom, Portugal and the United States, and they can be requested from: <http://www.internet.solvay.com/safety/shenrc5.htm#table>.

SOLVAY, A CHEMICAL AND PHARMACEUTICAL GROUP

Innovation and competitiveness

Solvay is an international chemical and pharmaceutical Group founded in 1863 and based in Brussels (Belgium). The Group is active in 46 countries. Over 33,000 people work in these locations every day, serving some 160,000 customers.

Solvay Group activities are divided into 18 Strategic Business Units distributed among four activity sectors: Chemicals, Plastics, Processing and Pharmaceuticals.

In order to develop in areas where it has a competitive technical or commercial edge, the Group invests and enters into agreements with key partners.

This strategy has made Solvay a world leader for most of its products.

Solvay S.A. - Headquarters - Corporate Communications

Rue du Prince Albert, 33 - B-1050 Brussels
Tel.: +32-2-509 60 16 - Fax: +32-2-509 72 40
Internet <http://www.solvay.com>

Solvay S.A. - Central Management Technology - Health safety environment

Rue de Ransbeek, 310 - B-1120 Brussels
Tel.: +32-2-264 34 04 - Fax: +32-2-264 34 75

UNITED KINGDOM - Solvay UK Holding Company Ltd - Grovelands Business Centre

Boundary Way - Hemel Hempstead HP2 7TE
Tel.: +44-1442-23 65 55 - Fax: +44-1442-23 87 70

AMERICAS - United States, Canada and Mexico - Solvay America, Inc.

3333 Richmond Avenue - Houston, TX 77098-3009 - USA
Tel.: +1-713-525 60 00 - Fax: +1-713-525 78 87

BRAZIL and ARGENTINA - Solvay Do Brasil s.a.

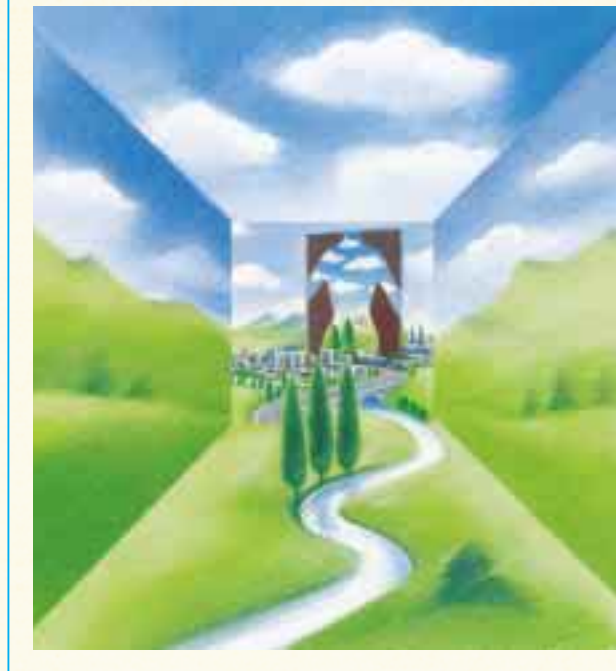
Rua Urussui, 300, 5e andar - Itaim BIBI
04542-903 São Paulo - SP
Tel: +55-11-30 46 50 00 - Fax: +55-11-30 46 52 87

ASIA-PACIFIC - Singapore - Solvay Asia Pacific Pte Ltd

80, Anson Road 37-00 - IBM Towers
Singapore 079907
Tel.: +65-222 69 91 - Fax: +65-221 27 68



a Passion for Progress®



1 9 9 9
H E A L T H - S A F E T Y - E N V I R O N M E N T

Produced by Olympe, +33-1-45 72 33 66



SOLVAY'S COMMITMENT

The Group's policy regarding health, safety and the environment is aimed at producing:

- better performance in production activities;
- better management of the products resulting from these activities, including related services.

In order to achieve this, Solvay acts on the eight key principles in its **Responsible Care®** program:

Commitment

1. To apply a formal policy of protecting people and the environment, defined at the highest level and supported by all staff.

Consultation

2. To participate in defining future objectives and developing standards.

Content

3. To continue reducing the impact of production units on the environment

4. To continue prevention and mastering of the risk of accidents.

5. To ensure that the effect of our end products and their distribution and use is quantified and positive, and that the adverse effects are minimal.

6. To take into account what happens to our products after use. To encourage recycling and promote proper disposal.

Control

7. To assess the situation constantly and quantify the progress made.

Communication

8. To provide information in a spirit of dialogue and mutual respect.

OVERVIEW OF EMISSIONS (87 PLANTS)

t = tonnes kt = thousand tonnes	1990	1992	1994	1996	1998
Emissions into the air					
SO ₂ (kt)	33.4	31.5	23.9	23.5	18.1
NO _x (kt)	10.7	11.9	13.1	13.5	13.8
Solid particulates (kt)	10.7	15.9	16.7	13.1	9.4
Volatile organic compounds (kt)	21.3	14.9	13.5	9.7	12.7
Volatile inorganic compounds (kt)	3.7	3.5	2.5	2.4	2.3
Heavy metals (t)	8.7	7.4	6.4	6.8	3.1
Emissions into water					
Chemical oxygen demand (kt)	14.5	14.6	11	9.8	7.7
Total Solvay priority substances (t)	103	35	25	31	29
Nitrogen (kt)	1.8	2.2	2	1.9	2.7
Phosphorus (t)	87	62	62	83	102
Heavy metals (t)	97	97	72	89	72
Waste classified as hazardous					
Off-site landfill (kt)	35	31	23	13	8
On-site landfill (kt)	0.51	0.45	0.4	6.08	0.44
Off-site treatment (kt)	21.8	9.9	8.6	13.4	8.9

Production index: 1990 = 99, 1998 = 121

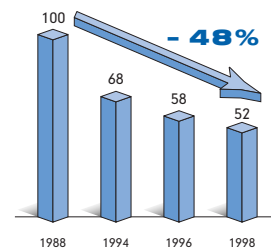
HEALTH, SAFETY AND THE ENVIRONMENT ASSESSMENT BASED ON 87 PLANTS

In 1997-1998, the Solvay group continued to improve the overall ecoefficiency of its activities, against a background of increasing production. Emissions from plants into the air and into water, and also the generation of waste, have been reduced. The new electricity-steam cogeneration power stations are contributing significantly to energy savings.

Solvay Group products have, in many markets, found new applications which are helping achieve the aims of sustainable development: reduced pressures of human settlements on the environment, protecting the ozone layer, reducing industrial emissions, processing or recycling of waste, and reduced pollution from transport facilities.

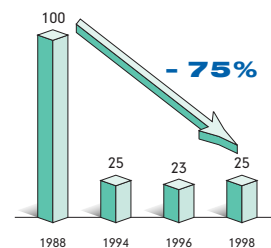
Air emission index*

The global index of emissions into the air has fallen 48% since 1988.



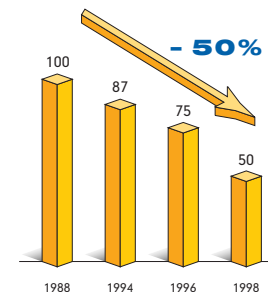
Water emission index*

The global index of emissions into water has fallen 75% since 1988.



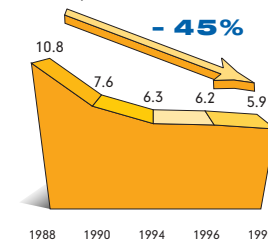
Waste index*

The global index of wastes from production activities has fallen 50% since 1988.



Safety index

Safety has made overall progress in the plants. The accident frequency rate (LTIF) for Solvay staff is 5.9 per million working hours. This represents a 5% improvement compared with 1996 (45% improvement since 1988).



*These Solvay indices have been used since 1988 and reflect the general trend of environmental

performance in Solvay plants.

HUMAN AND FINANCIAL RESOURCES

An extensive network of specialists in health, safety and environmental issues helps each plant decide and implement its activities.

Joint ventures can also make use of this network, whose main tasks involve a concern with:

- the health and safety of staff and the local community at production sites,
- the safety of facilities,
- protection of the environment,
- the safety of products and their transportation.

Financial resources allocated to health, safety and the environment (HSE)

Million euros	1996	1998
New investment	86.7	57.0*
% of total investment	15.0%	11.0%
Operating expenditure	248.0	220.0
% of total operating expenditure	4.5%	3.8%
R&D	24.8	16.3*
% of total R&D expenditure (exc. pharma)	17.0%	13.0%
Total	359.5	293.3

*The reductions in 1998 do not represent a general medium-term trend.

Energy

Electricity-steam cogeneration greatly reduces CO₂ emissions, as better use is made of the energy in the fuel and because losses are reduced. Such cogeneration facilities came into use at three additional plants in 1997-1998. At each plant where it is installed, it enables overall CO₂ emissions to be reduced by 50-60%.

Annual improvement in CO₂ emissions as a result of cogeneration: Bernburg 877,900 tonnes; Rheinberg 307,750 tonnes; Rosignano 1,580,000 tonnes.